

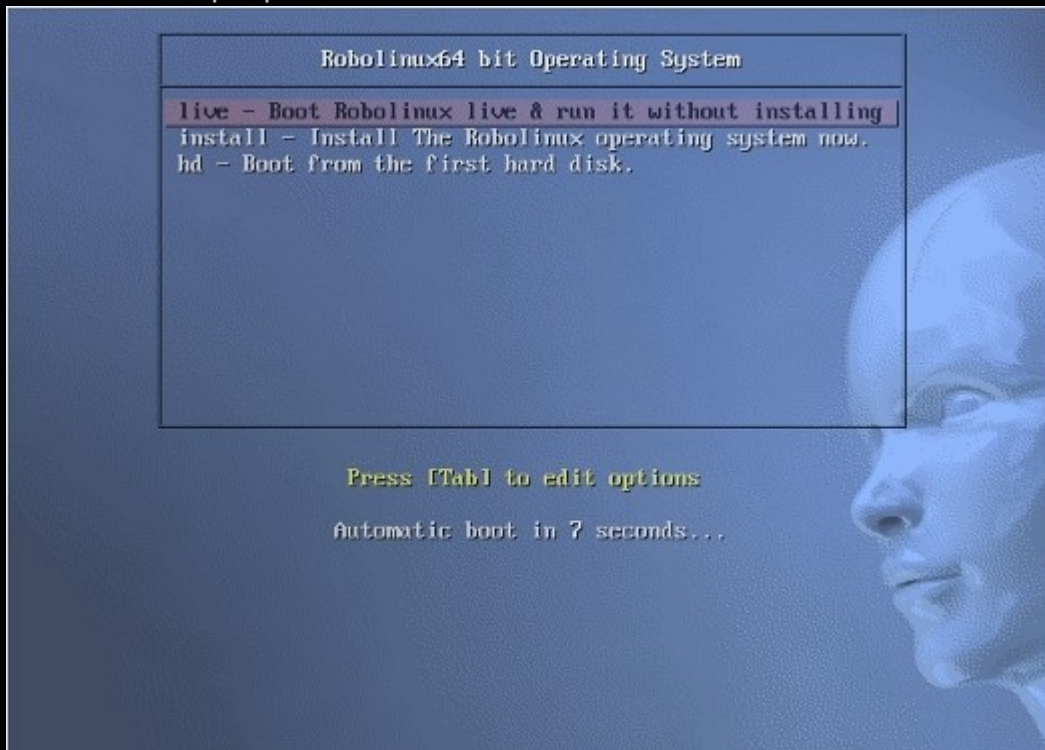
How to install Robolinux

Follow these simple steps to install Robolinux easily & quickly

- Backup all of your important existing data on your Windows machine. Most PC Users have a backup, make sure you do this before you proceed!
- Download Robolinux32 or Robolinux64 to your Windows PC Desktop.

Note: If you don't know whether your PC or laptop has a 32 or 64 bit processor, then simply google the make and model number to find out.

- Burn the Robolinux.iso you downloaded to a DVD
If you need instructions on how to burn an iso image file onto a DVD visit <http://robolinux.org/burn-iso>
- Now insert your new Robolinux.iso DVD into your Windows machine and reboot it.
- Your PC or laptop will load this Robolinux installer Welcome screen

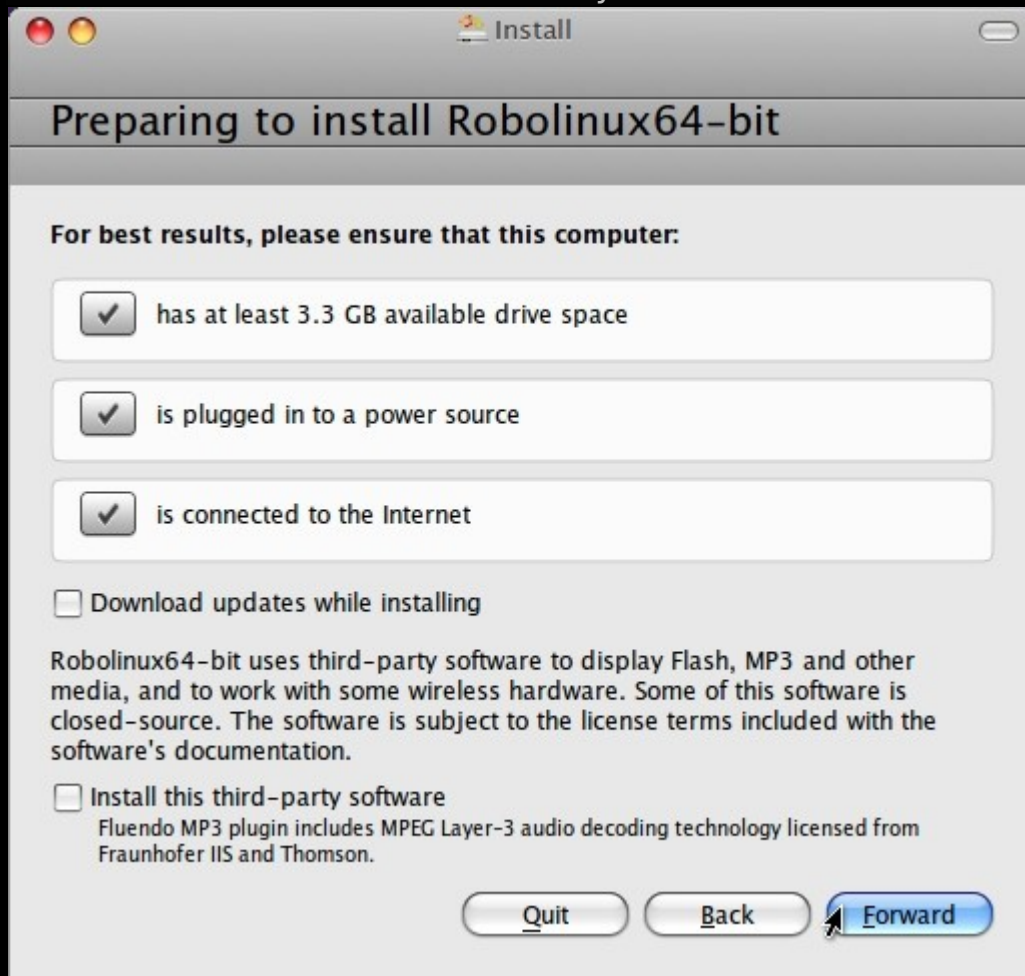


The default selection is to run it live off of the DVD without installing Robolinux. Feel free to do that if you like, otherwise click your arrow button down to Install - start the installer directly. Then you will see this screen below.

- Select your language screen

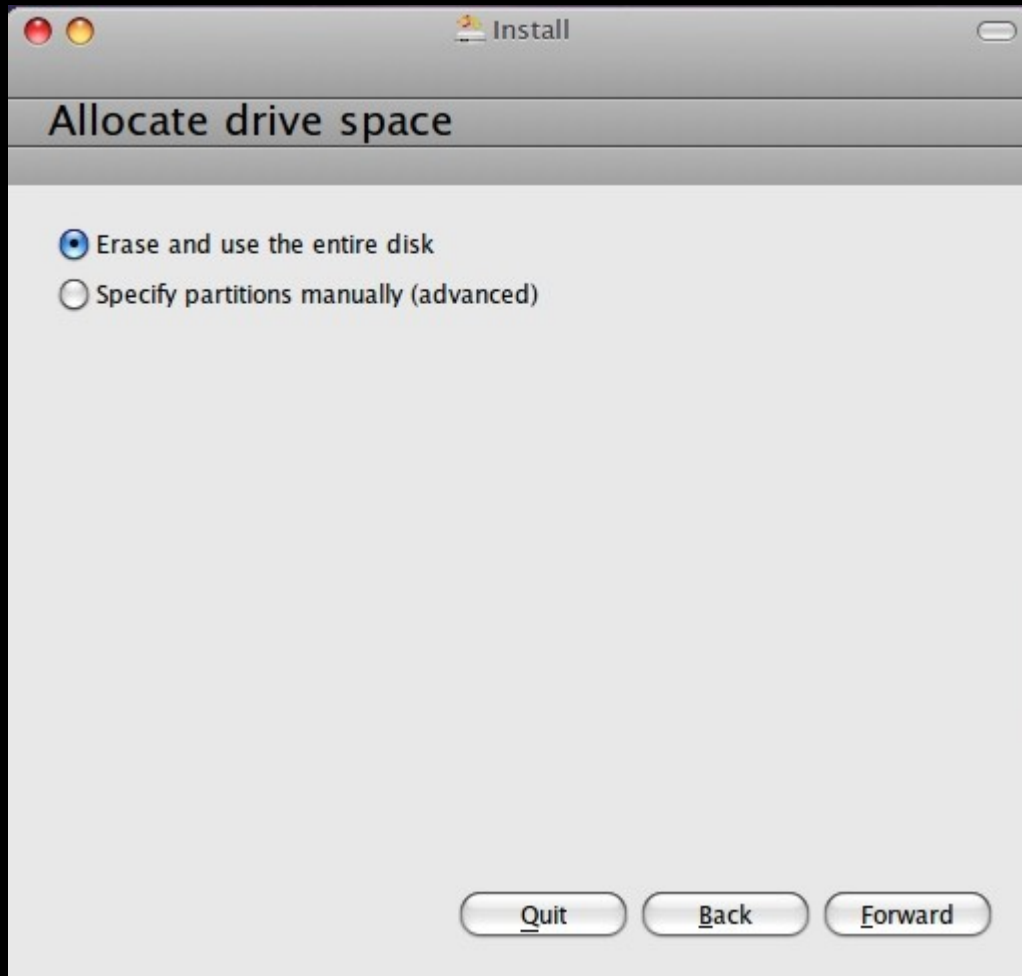


- Be sure you are plugged into the internet and not on wifi. Then click the forward button. No need to check any boxes.

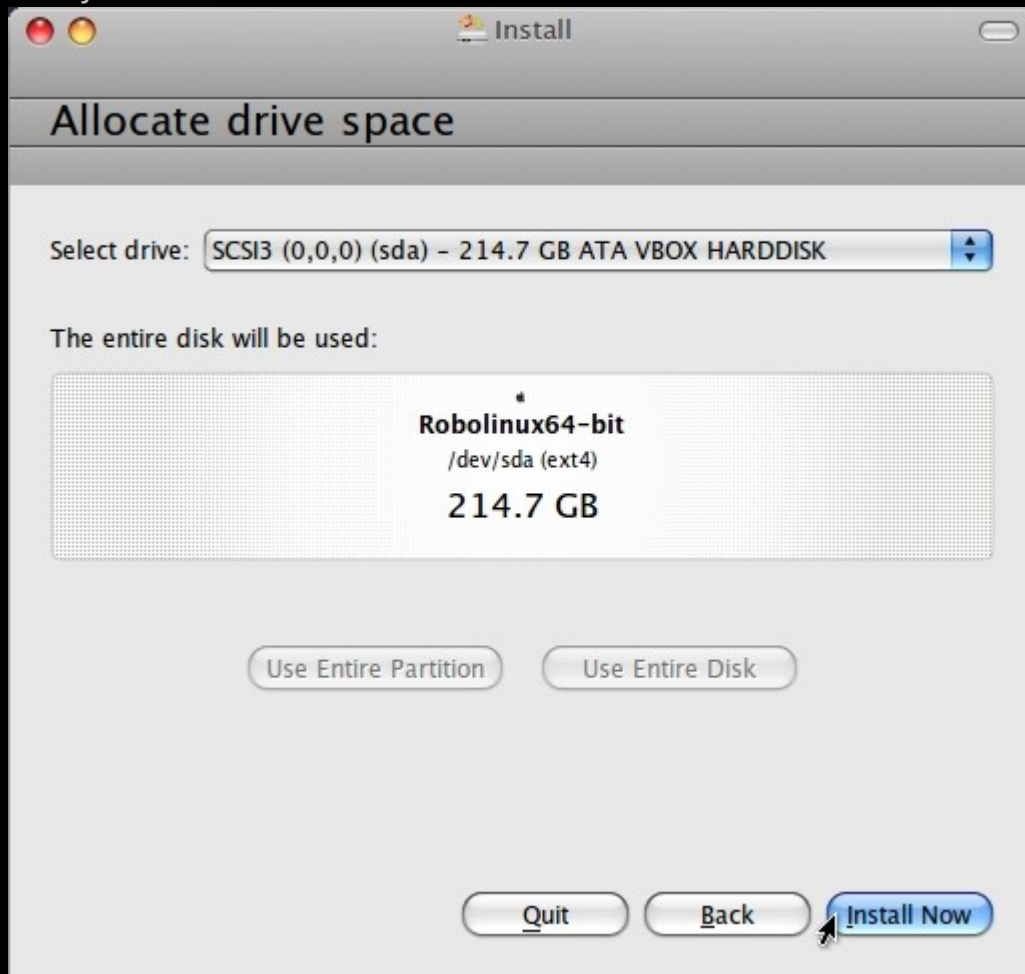


- click the forward button unless you want to set up a dual boot system.

1. For setting up dual boot systems visit <http://roboLinux.org/faq/4.html>



- click install now. In less than 5 minutes Robolinux will be fully installed and ready to use.



- Set your geographic location and timezone. You can drag the latitude bar or type in your city.



- Select your keyboard or if you are not sure click on figure out keyboard layout.



- Type in your full name, a name for your pc, then your username & password.

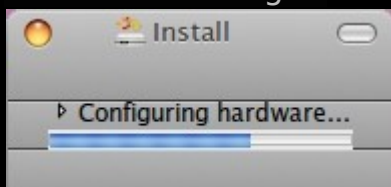


The screenshot shows a window titled "Install" with the heading "Who are you?". It contains several input fields and options:

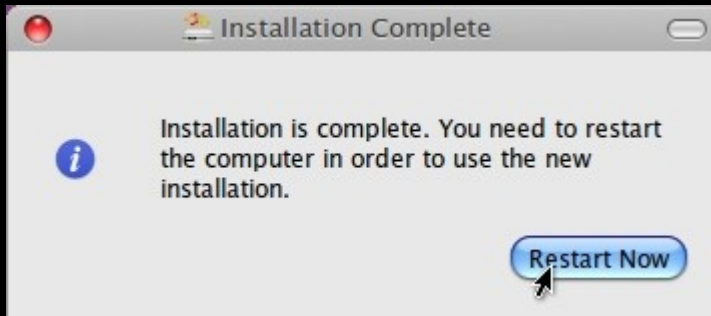
- "Your name:" followed by a text input field containing the letter "I".
- "Your computer's name:" followed by an empty text input field. Below it is the text "The name it uses when it talks to other computers."
- "Pick a username:" followed by a text input field containing "Username".
- "Choose a password:" followed by a text input field containing "Password".
- "Confirm your password:" followed by a text input field containing "Confirm password".
- Three radio button options:
 - Log in automatically
 - Require my password to log in
 - Encrypt my home folder

At the bottom right are "Back" and "Forward" buttons. At the bottom left, there is a progress bar with the text "Getting the time from a network time server..." above it.

- Robolinux is now configuring all your hardware drivers really fast. Only one more minute to go!.



- Robolinux is now fully installed and updated.



- Click Restart now and enjoy your blazing fast, virus free pc or laptop!
All future updates will be done automatically. If you want to go 3D visit
<http://robolinux.org/faq/2.html> to enjoy the future now!

Thank you for installing Robolinux. If you ever need help just click on the Contact & Support button from any of our webpages.